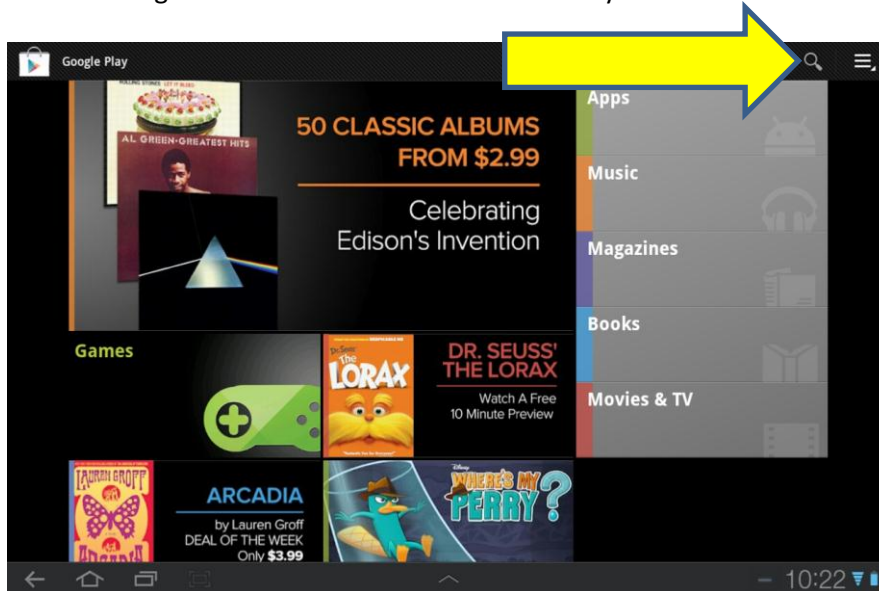


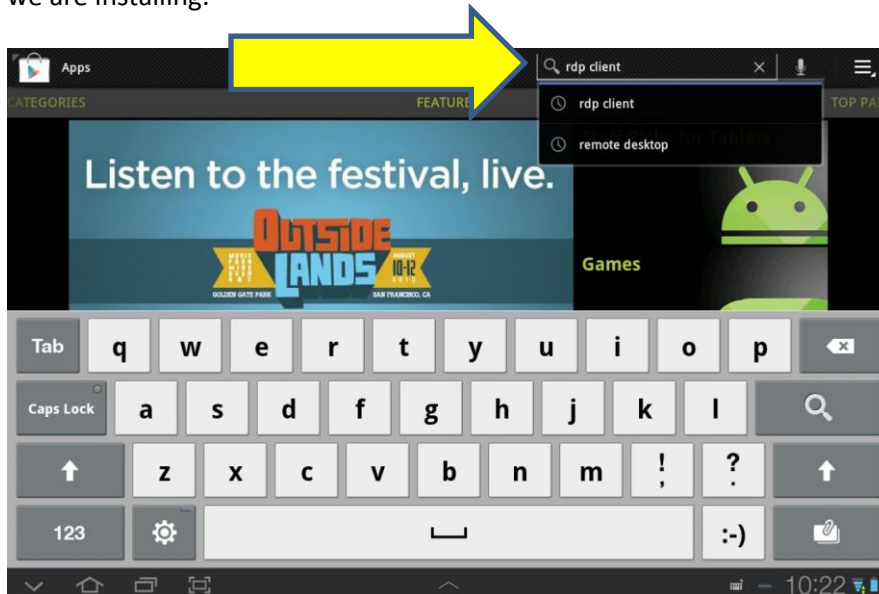
The following screenshots were created on an Samsung Galaxy 10 running Android Honeycomb (3.0) Your results may vary if a different version is used.

Modern Android devices use Google play market to download and manage software installed on the Android device. The exact location of the market icon on your device will vary but it is always called "Play Store" and is located by default on your devices main page.

The following is the main screen shot from the Play Store:

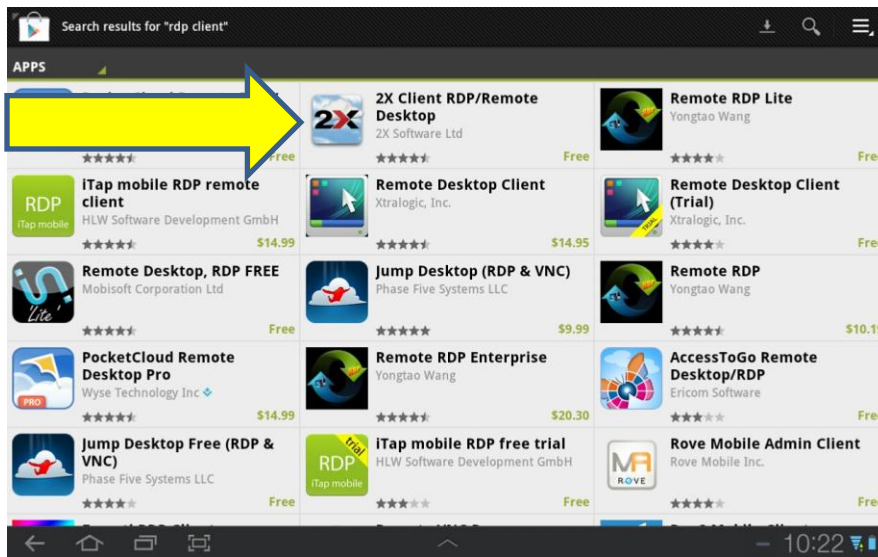


Tap the search icon in the upper right (looks like a magnifying glass) to proceed to search for the client we are installing:

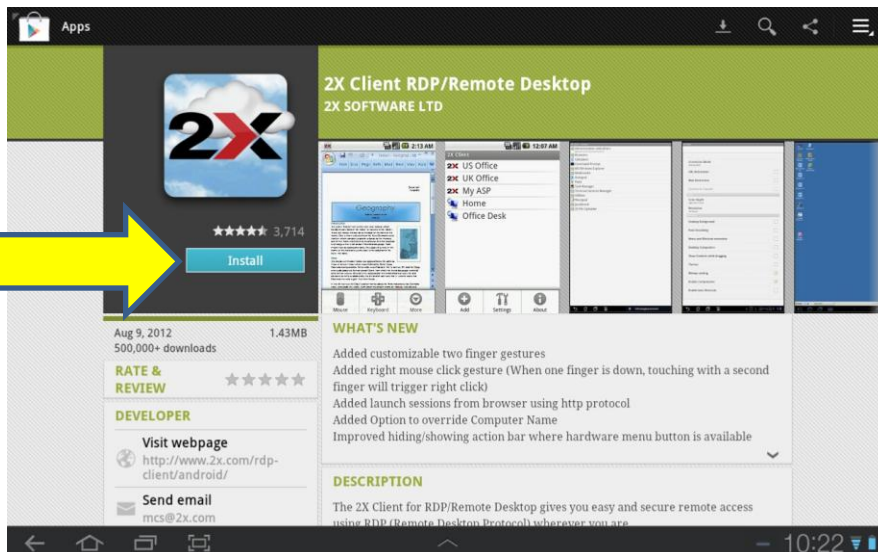


As show enter "rdp client" for your search keyword and continue with your search.

The search will bring up a list of available clients. You will be selecting the 2X Client for connection. Other clients have not been tested and may or may not work depending on the individual client. Only the 2X client has currently been tested.

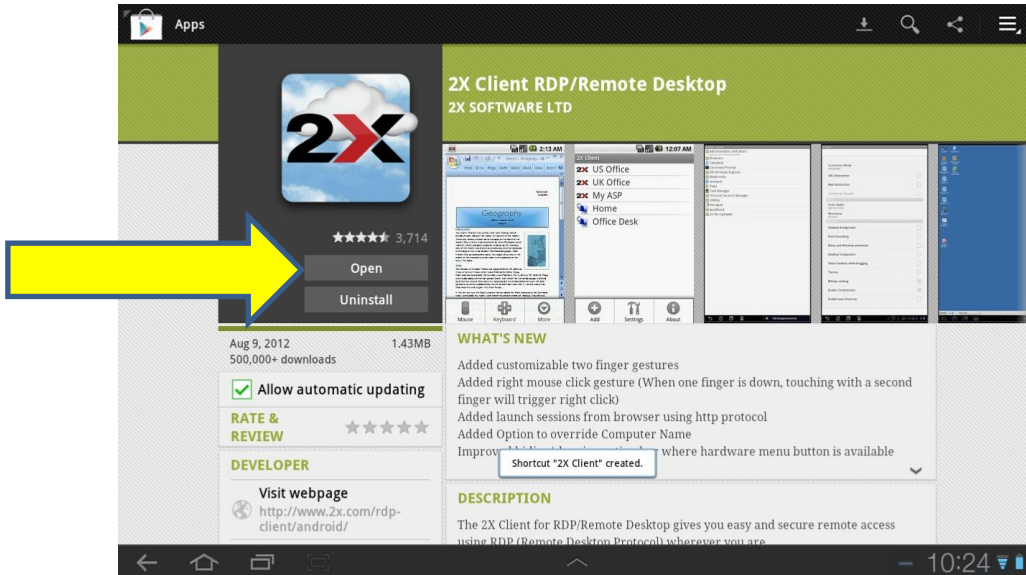


TAP the 2X Client to select it for installation.

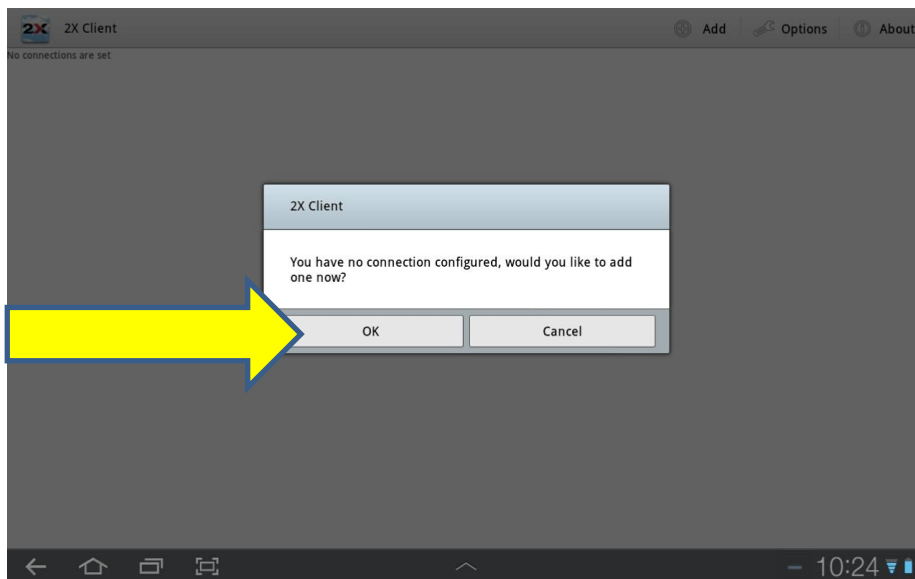


TAP install to proceed with application installation. You may get various messages during installation depending on the version of Droid and Play you are using. When the installation is complete the above screen will change allowing you to "Open" the application. When this option is available then the installation is complete. The time taken can vary greatly depending on your connection speed and the version of device you are using.

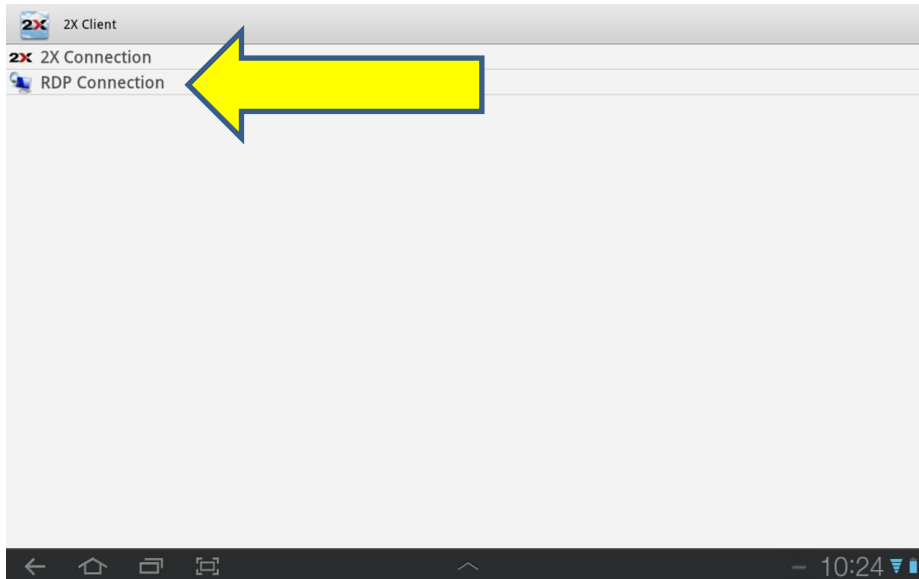
Here is the screen after install with the Open option now available:



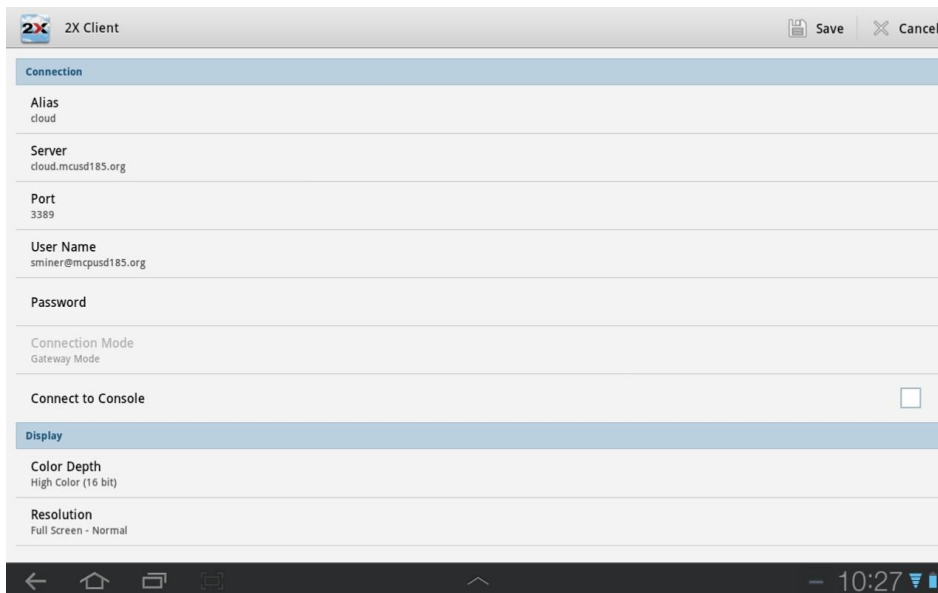
The 2X cloud icon will be placed on your desktop. Tap the icon on your desktop or the Open selection if you are still inside of the play store to start the client and you will be required to create a new connection as shown. Select Ok to continue.



The connection type screen is displayed select “RDP Connection”:



The first page is the most important and defines your server connection and user. You may page down to modify performance related settings if required.



Alias – Any value to help you remember the connection.

Server – MUST be “cloud.mcusd185.org”

User Name – this is your assigned fully qualified e-mail such as [sminer@mcusd185.org](mailto:sminer@mcusd185.org)

Password – this is your assigned password.

Leave connect to a console off. If you do not specify a user or password you will be prompted each time you connect.